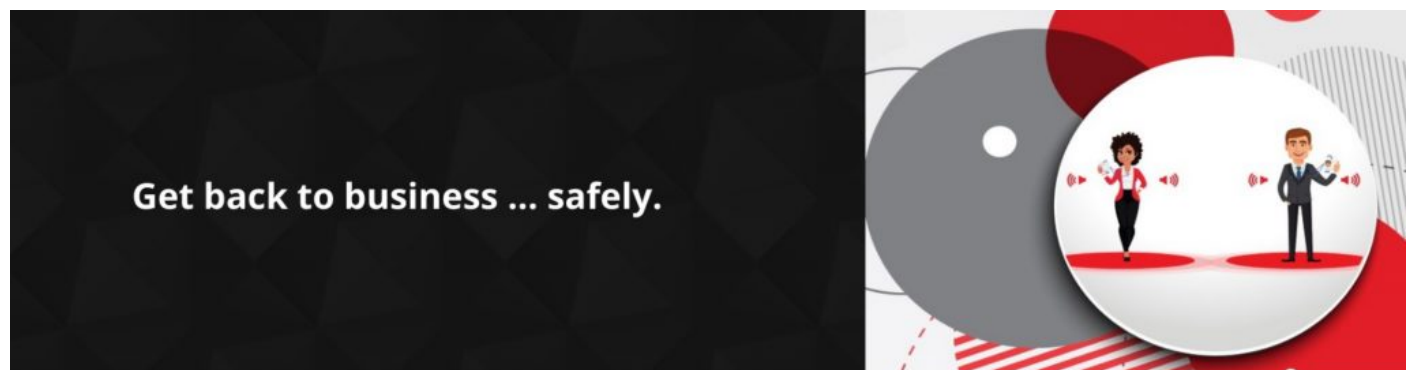


ANTI-COVID-19 ALARM SYSTEM

The easy-to-use digital solution keeping employees, customers and businesses safe.



The easy-to-use digital solution

A specially designed digital employee badge can help you re-open your physical workplaces during the COVID-19 pandemic while assuring your employees they are staying safe.

With each employee assigned their own wearable “employee pass,” the badge’s alarm system alerts them when they get closer than the permitted physical-distancing requirement.

You can also have the badge alert employees that an area within your operation (room, entranceway, elevator, lunchroom) has met its maximum capacity and they should not enter. You can create your own “geofence.”

If individual notification is all you need, we can set you up with a system with no additional monitoring. Or, for heightened levels of safety, we can provide you with a system that allows for historical tracking so you can inform those who may have come into contact with someone who is diagnosed with COVID-19. The system can also work with body temperature sensors, scanners to determine proper use of personal protective equipment (PPE) ... and much more.

The choice is yours to meet your safety needs.

To see examples of this solution in action, please **watch this short video**.

Further details below, or download our brochure **here**.



Anti-COVID-19 ALARM SYSTEM

The easy-to-use digital solution keeping employees, customers and businesses safe

A specially designed digital employee badge can help you re-open your physical workplaces during the COVID-19 pandemic while assuring your employees they are staying safe.

With each employee assigned their own wearable "employee pass," the badge's alarm system alerts them when they get closer than the permitted physical-distancing requirement.

You can also have the badge alert employees that an area within your operation (room, entranceway, elevator, lunchroom) has met its **maximum capacity** and they should not enter. You can create your own "geofence."

If individual notification is all you need, we can set you up with a system with no additional monitoring. Or, for heightened levels of safety, we can provide you with a system that allows for historical tracking so you can inform those who may have come into contact with someone who is diagnosed with COVID-19. The system can also work with body temperature sensors, scanners to determine proper use of personal protective equipment (PPE) ... and much more. The choice is yours to meet your safety needs.



APPLICATIONS

- **Keep a safe distance**
- **Minimise contact/limit access:** Help control people through normally crowded entry and exit points, elevators, stairways, limited-occupancy rooms, or other areas of the business where bottlenecks may have normally occurred. Adjust direction of travel.
- **Monitor third-party access:** Give a badge to contractors, consultants, clients, customers, or delivery people who need access to your site.
- **Enhance sanitisation schedules:** Determine which areas are being most frequently accessed, which can help you determine cleaning schedules.
- And more!

INDUSTRY USES

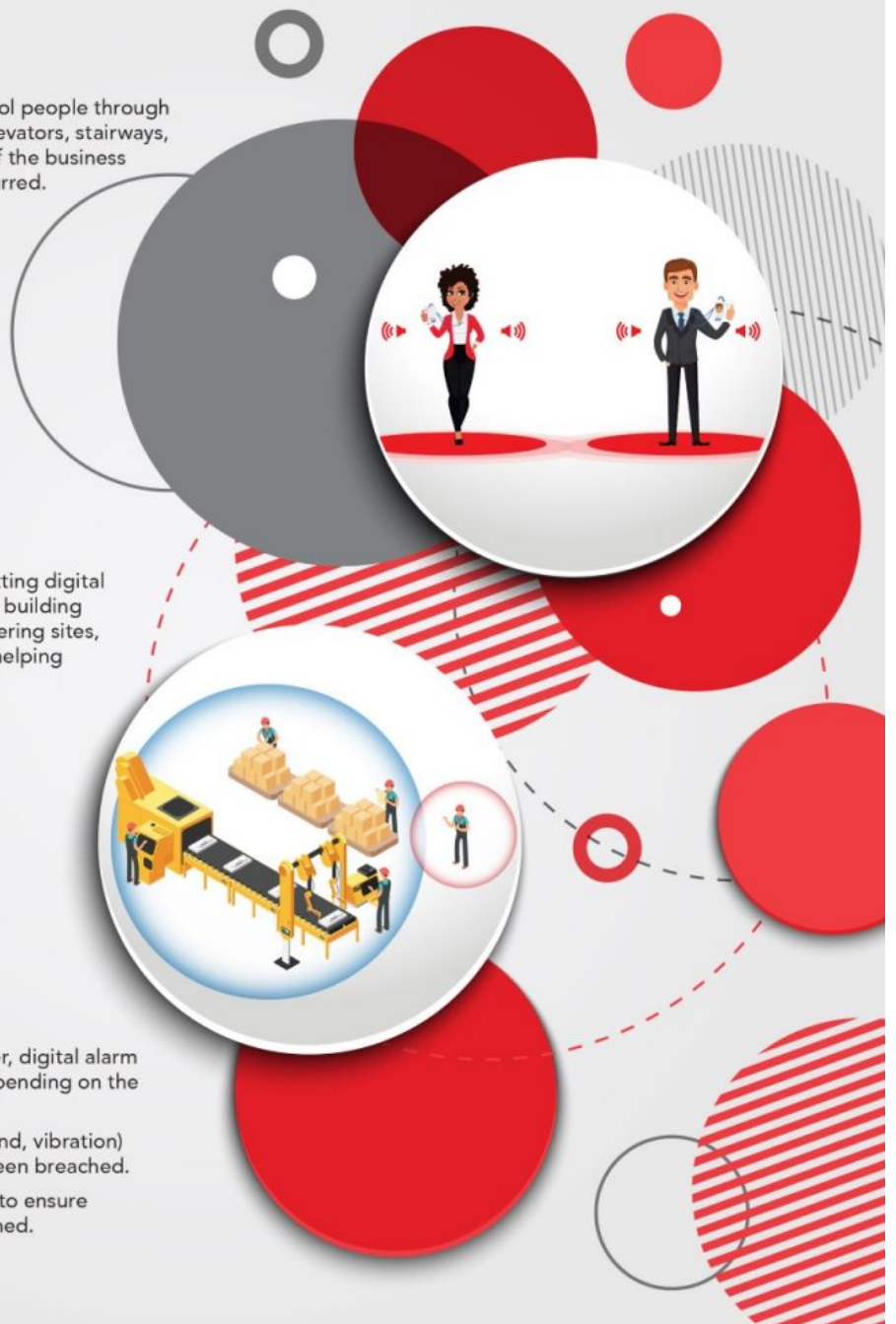
Businesses across a host of industries are putting digital badges to use quickly and easily. From office building settings to manufacturing lines to mass-gathering sites, such as airports and schools, this solution is helping business re-start and stay running.

- Manufacturing
- Utilities
- Construction sites
- Transportation infrastructures
- Healthcare settings
- Airports
- Sports and entertainment venues
- Schools
- Retail outlets

HOW IT WORKS

When two or more users approach each other, digital alarm emits warning signals of varying intensity depending on the distance.

- **Monitor people:** alerts them (lights, sound, vibration) when required physical distancing has been breached.
- **Monitor places:** counts people in zones to ensure maximum occupancy levels aren't breached.



BENEFITS

- **Keeps employees and customers safer:** You don't have to rely on each person estimating their physical distance. The digital alarm system actively safeguards for compliance. By ensuring employees are taking the necessary precautions to prevent the spread of COVID-19, the risk of outbreak among employees decreases. This reduces the need to impose stronger preventative measures, such as fewer employees in some spaces, or even closure of parts or all of the business.
- **Ensures employee wellbeing:** Staff feel safer and have more workplace confidence by seeing and hearing the device in action. They can react immediately to adjust their activity themselves. You keep your safety protocols on a level playing field for all; you avoid people thinking they may be the exception to the rule, and this helps reduce potential conflict. You can even let your employees test out the devices in advance at home to help decrease any anxiety they may have about returning to work.
- **Faster business restart:** The badges are ready to use, helping you to meet safety protocols quickly, and significantly reduce the time needed to ramp-up or reopen your business.
- **Reduces re-configuration costs:** Moving desks or building barriers can be time-consuming and expensive. A digital solution lets you be more flexible when it comes to re-configuring workspaces. In many instances, you can keep the same workspace layout by using the badges to help enforce the needed physical distancing.
- **Wearable, wireless and easy to use:** Available in pendant, bracelet, or badge formats. And for simple, non-monitoring use, doesn't require any other infrastructure, such as Wi-Fi, antennas, etc. It's an easy solution to communicate, and you can quickly train staff to use it effectively.
- **No monitoring needed:** This fully automated solution means you don't need to add people to monitor adherence to your safety protocols. Your team can focus on their regular work.
- **But you can monitor if you want!** All alarms, including the timestamp, are saved in the devices memory so they you can retrieve the information if needed. You can use it to manage consistent breaches of protocol or for historical mapping of contact between employees if an outbreak should occur. You can advise those who may have been in proximity of an affected person.
- **Faster issue-response time:** You can quickly respond to any issues that may arise and adapt business strategies to ensure ongoing compliance.
- **Enhanced health and safety:** Heighten your health and safety procedures.
- **Secure and private:** Designed with an attention to your cybersecurity needs. Data is not shared between devices. In addition, it complies with applicable privacy regulations (GDPR).
- **Helps show you are meeting requirements:** By using this digital solution, you show you're taking "every reasonable precaution" to prevent the spread of COVID-19. It can show you are regularly monitoring for issues and adherence. This may help to reduce inspections and compliance orders.



ADVANCED USES

This digital alarm system is highly customisable with other available solutions for enhanced personal and business safety:

- Geofencing – limit access to parts of your work site
- Body temperature – thermo scanner
- Align with cameras to monitor PPE usage
- Air-quality alarm

YOUR TEAM AT COUGAR AUTOMATION

Cougar Automation Ltd is a well-established, reliable and sought-after supplier of System Integration Services.

For more than 25 years, we've continued to be passionate about providing you with unprecedented customer service from people who care.

We have all of the business systems, financial strength and accreditations necessary to effectively service and exceed your expectations.

DISCOVER MORE

Don't let COVID-19 stop you from getting your business up and running as quickly — and safely — as possible.

Contact us today to get an Anti-COVID-19 alarm system working for you.

Tel: 02392 269960

Email: sales@cougarautomation.com



[Privacy Policy](#) | [Group websites](#)

[Home](#) |

[Contact us](#) |

[Accreditations](#) |

[Our partners](#) |

[Services](#) |

[Cookies](#) |



[Configure cookies](#)